

# Modular electrical peripherals, for type 03/04

Technical data – Multi-pin distributor



### Function

MPV multi-pin distributors are suitable for the distribution of input and output signals to PNP sensors and valves via the M12/M8 plugs. The multi-pin distributors, in conjunction with the input module VIGE-03-FB-16-SUBD-S

(→ 4 / 4.8-187), collect the sensor signals directly in the machine and forward them to the input module on the 15-pin Sub-D sockets via a multi-pin cable.

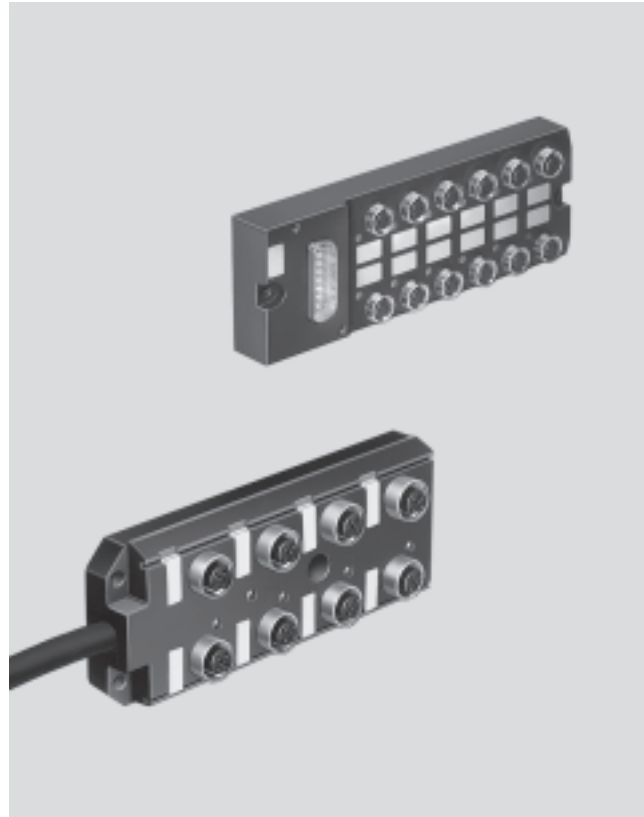
- LED for signal status display
- Only one cable to installation location
- A broad range of accessories

### Type MPV-E/A...-M8

The multi-pin distributor facilitates the connection of max. 8 or 12 input signals to 3-pin M8x1 plugs. The connecting cable KMPV-SUB-D-15-..., pre-assembled at one end, with the 15-pin Sub-D socket is connected to the multi-pin distributor. The open end of the cable is fitted with the plug socket SD-SUB-D-ST15 and connected to the input module.

### Type MPV-E/A08-M12

Connection of max. 8 input signals to 5-pin M12 plug. The connecting cable is permanently attached to the multi-pin distributor. The open end of the cable is fitted with the plug socket SD-SUB-D-ST15 and connected to the input module. Switching status display via yellow LED. Sensor voltage display via green LED.



General technical data			
Type	MPV-E/A08-M8	MPV-E/A12-M8	MPV-E/A08-M12
Part No.	177 669	177 670	177 671
No. of inputs/outputs	8	12	8
Type of mounting	2 through-holes or on H-rail <sup>1)</sup>		3 through-holes
Connection	M8x1, 3-pin		M12x1, 5-pin
Permissible voltage [V]	10 ... 30 DC		10 ... 30 DC
Current-carrying capacity	Max. 1 A per module slot Total current: max. 4 A		Max. 4 A per module slot Total current: max. 12 A
Protection class to EN 60 529	IP65 (fully assembled)		IP67 (fully assembled)
Temperature range	Operation	[°C] -20 ... +80	-20 ... +80
	Storage	[°C] -20 ... +80	-20 ... +80
Materials	Housing	Polyamide	
	Sockets	Brass, gold plated	
	Cable	-	
Weight [g]	100 <sup>2)</sup>		200 <sup>2)</sup>

1) With adapter CP-TS-HS-35

2) Without cable

# Modular electrical peripherals, for type 03/04

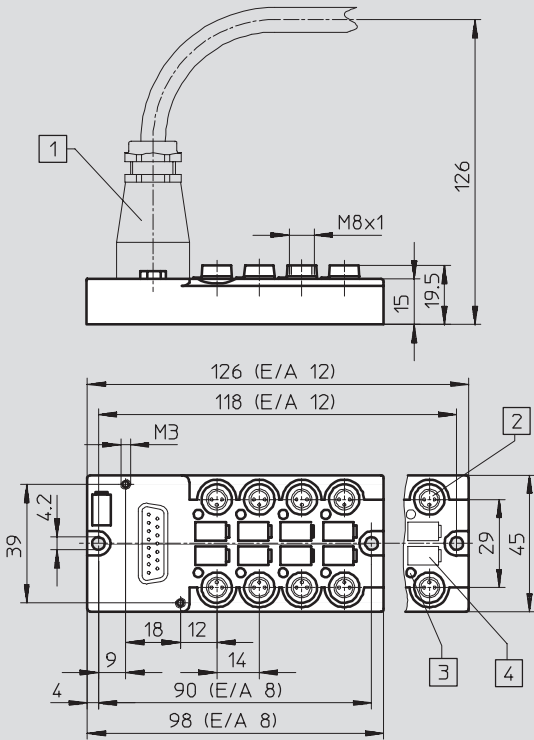
Technical data – Multi-pin distributor



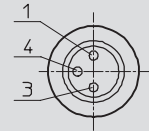
## Dimensions

Download CAD data → [www.festo.com/en/engineering](http://www.festo.com/en/engineering)

MPV-E/A...-M8

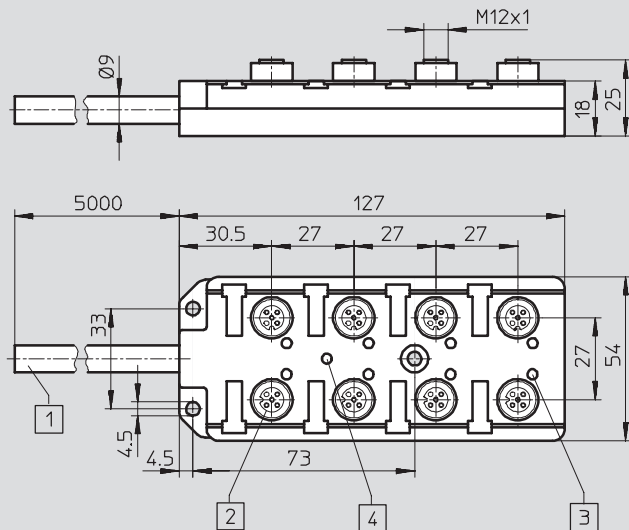


- 1 Multi-pin connection
- 2 3-pin socket, M8x1
- 3 Switching status display, yellow
- 4 Inscription label (type IBS-6x10)

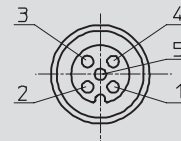


- 1 24 V DC
- 3 0 V
- 4 Signal line (1 ... 8) or (1 ... 12)

MPV-E/A08-M12



- 1 Connecting cable, 5 m
- 2 5-pin socket, M12 x 1
- 3 Switching status display, yellow
- 4 Voltage display, green



- 1 24 V DC
- 2 n.c.
- 3 0 V
- 4 Signal line (1 ... 8)
- 5 Earth

# Modular electrical peripherals, for type 03/04

Accessories – Multi-pin distributor



Pin allocation			MPV-E/A08-M12		
MPV-E/A...-M8			Signal line pins 1 through 12		
Cable with 15-pin Sub-D plug			M12 socket location	Core colour	
	Pin No.	M8 socket location	Core colour		
	1	0/4	white	1/4	white
	2	1/4	brown	2/4	green
	3	2/4	green	3/4	yellow
	4	3/4	yellow	4/4	grey
	5	4/4	grey	5/4	pink
	6	5/4	pink	6/4	red
	7	6/4	blue	7/4	black
	8	7/4	red	8/4	magenta
	9	8/4	black	24 V DC	brown
	10	9/4	magenta	0 V	blue
	11	10/4	grey-pink	PE	green-yellow
	12	11/4	red-blue		
	13	24 V DC	white-green		
	14	0 V	brown-green		
15	0 V	white-yellow			

Ordering data for MPV-E/A08-M12				
Designation			Type	Part No.
<b>Plugs and cables</b>				
	Connecting cable for sensors, M12-M12	2.5 m	<b>KM12-M12-GSGD-2,5</b>	<b>18 684</b>
		5 m	<b>KM12-M12-GSGD-5</b>	<b>18 686</b>
	Plug socket <sup>1)</sup>		<b>SD-SUB-D-ST15</b>	<b>192 768</b>
<b>Protective cover</b>				
	Cover caps (10 pieces) for unused terminals		<b>ISK-M12</b>	<b>165 592</b>

1) A Sub-D plug socket is required to establish a connection between the multi-pin distributor and input module VIGE-03-FB-16-SUBD-S.